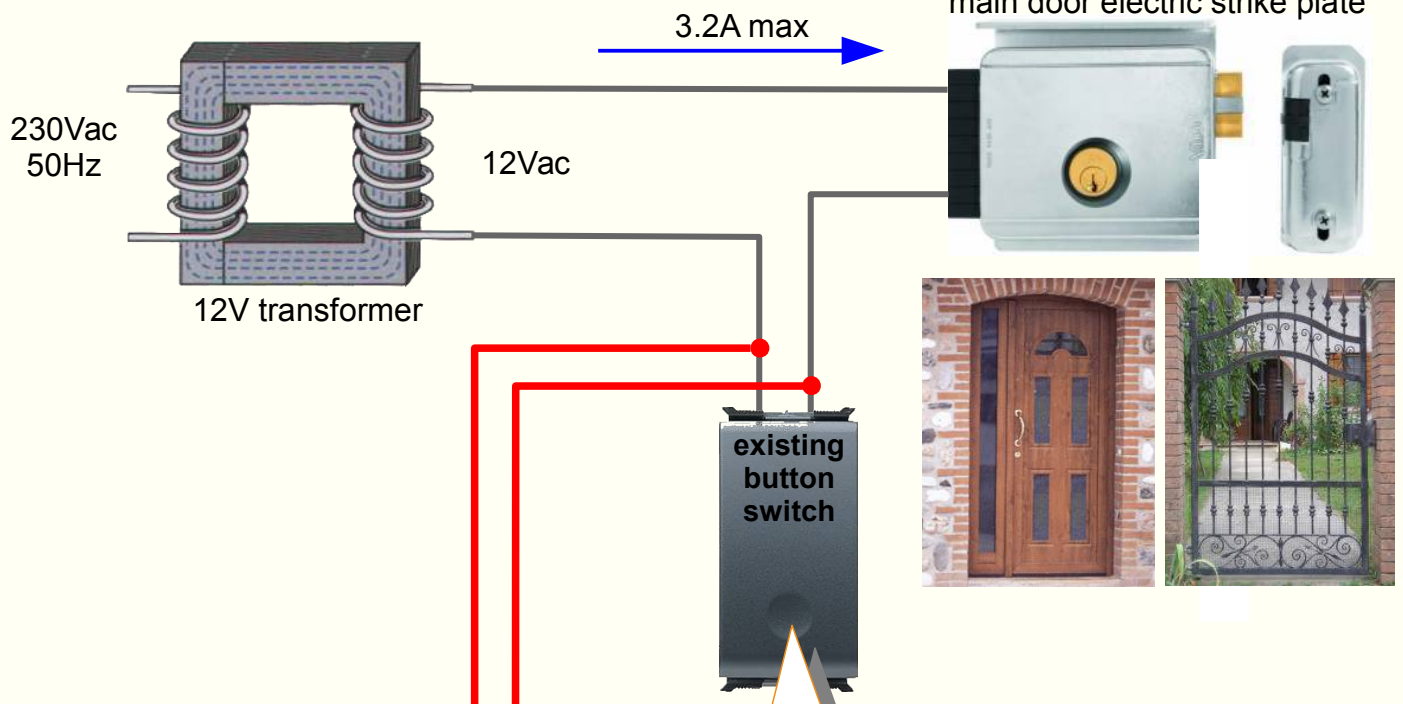


Automating, in less than 10 minutes, a main door and/or a pedestrian gate!

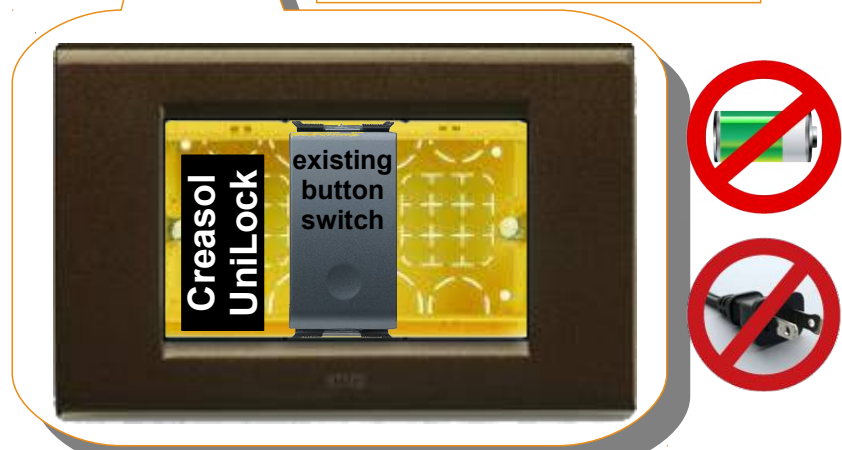
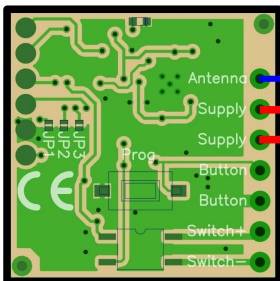
Typical scheme of a switch/intercom used to open a main door and/or a pedestrian gate



UniLock installation takes less than 10 minutes: **just connect the 2 wires to the existing switch**. Then you can **choose 1 or 2 frequencies** and use almost any existing remote controls in those frequencies to open the main door or pedestrian door.!

UniLock is very compact, **3x3x1cm**, and fits anywhere! **Only 2 wires: NO battery or external supply required!**

Creasol UniLock universal receiver



Now you can use almost any remote control in the market, AM or FM, fixed or rolling code, to open your main door, pedestrian gate or any other system using an electric lock.

Frequency can be user-selected: **433.42, 433.92, 434.15, 434.42, 868.3, 868.5, 868.8 MHz** or, outside UE, 288, 300, 303, 306, 310, 315, 318, 330, 390, 403.55, 418MHz.

From Rev.5 you can **program 2 different frequencies and modulations of your choice**, so **UniRec1 can be used with almost any remote controls transmitting in the selected frequencies with selected modulations (AM or FM).**